

2010

CATALOG

E Prices -
CO₂
Incubators



A CULTURE OF INNOVATION



New Brunswick
an eppendorf company

Expanding the Cell Culture Universe



Galaxy CO₂ Incubators

Take your cell culture to the next level, with these advanced new CO₂ Incubators from New Brunswick. Now featuring:

- **Active Humidification Option** for microplate and low volume cell culture.
- **Cooling Option** for better performance and wider temperature range.
- **Redesigned Sealed Inner Glass Door** for improved recovery, uniformity, and reduced CO₂ consumption (170 liter models only).
- **Perforated Shelving** for faster humidification recovery and improved uniformity.
- **Standard RS-232 Port** for communication and external data logging.

Additionally we offer three ranges of O₂ control for specialized high and low oxygen applications; a high-temperature disinfection option for the utmost in contamination control; and the largest amount of usable chamber volume of any incubators in the market.

Learn more at www.nbsc.com
or see pages 38 – 43.

a culture of innovation



New Brunswick
an eppendorf company

ABOUT GALAXY INCUBATORS

NEW

New Brunswick Galaxy® CO₂ Incubators

The sophistication required of today's cell culture laboratories is increasing rapidly in light of historic advances in the emerging fields of Stem Cell, IVF, as well as traditional cell culture. The specific requirements for experimentation have gone beyond a "one size fits all" platform to fit the need for both a robust and highly controllable incubator. These advancements have altered the role of the CO₂ incubator into an integral instrument of research advancement.

In response to these needs, NBS redesigned our Galaxy brand of CO₂ incubators to offer more standard features and more options. Additionally, we now offer a new full-featured, economical model, the Galaxy 48 S. By responding to the rapidly growing needs of cell culture, NBS has the CO₂ incubator to drive today's research, as well as meet the future demands of your laboratory.

Standard Features

Direct-Heating System: A unique heating profile uses natural convection to gently bathe cells in warm air. This not only allows for superior uniformity, but also guards against the rapid fluctuations seen in traditional fan-driven incubators which can cause drastic changes in genotypic and phenotypic expression of cells.

Fanless Design with Seamless Deep-Drawn Chamber: By eliminating the fan and housing, the Galaxy incubator is able to provide the maximum usable space in the chamber. There is no increase in desiccation on the top shelf so your samples are uniform throughout the chamber. In addition, the fanless design removes a historical hotspot of contamination as well as eliminates the need for expensive internal HEPA filters. This, combined with the seamless chamber, leaves contaminants no place to hide.

Advanced Display and Controller: The large 5.3" (13.5 cm) display on the Galaxy R Series incubators allows for comprehensive and rapid analysis of system performance and incorporates user-friendly intuitive controls. In addition, these models offer 72-hour on-board graphing capability of temperature, gas, and alarms.

IR CO₂ Sensor: The Infra-Red CO₂ sensor provides superior accuracy and stability over traditional thermo-conductivity sensors.

NEW – Sealing Inner Glass Door: Standard on 170 R & S models. Engineered to offer more rapid gas and temperature recovery, and allow users the ability to see their cultures while maintaining critical atmosphere.

NEW – 25mm Access Port: Standard on 170 R & S, and 48 R & S models, the access port allows additional probes and equipment to be used inside the incubator.

NEW – RS-232 Port: The RS-232 communications port allows for data off-loading and logging to a PC.

NEW – Perforated Shelves: The newly designed perforated shelves offer increased performance in temperature, gas and humidity recovery.



Options

High-Temperature Disinfection: One touch 120° C 4-hour sterilization cycle for enhanced contamination protection. Available on the 170 R & S, and 48 R.

Oxygen Control: Three levels of oxygen control to provide a hypoxic or hyperoxic environment.

- 1.0 – 19% O₂ Most common option is ideal for the majority of hypoxic applications
- 0.1 – 19% O₂ Option for strict hypoxic conditions.
- 1.0 – 95% O₂ Tri-gas option for both hypoxic and hyperoxic studies.

Applications: Stem Cell, IVF, *In-Vivo* mimicking
Available on the 170 R, 48 R, and 14 S

NEW – Cooling Option: Improved cooling option using a Peltier cooling unit to provide the ability to culture cells at or 10°C below ambient temperatures.

Applications: Plant Cell, Biofuels
Available on the 170 R

NEW – Active Humidification System: (AHS) allows you to set and maintain humidity using non-condensing humidification. This option also provides superior humidity recovery and humidity stability and prevents desiccation.

Applications: Low Volume, Microtiter Plate Culture
Available on the 170 R

Humidity Monitoring Package: The humidity package features a humidity sensor, display and humidity tray warning system for additional monitoring and control.

Applications: All
Available on the 170 R and 48 R

FULL-SIZED CO₂ INCUBATORS

Galaxy® 170 R & S, 170 Liter / 6.0 cu. ft. Capacity



The 170 Series offers the advanced LCD display with on-board 72-hour data logging.

Standard Features: include an IR CO₂ Sensor, sealed inner glass door, RS-232 communications port, and a 25 mm Access port. The integrated LCD controller allows simple on-screen programming of alarms and settings. The R Series allows for the full range of options including O₂ Control, Active Humidification, High-Temperature Disinfection, Active UV-Sterilization and cooling. Galaxy 170 incubators offer 6.0 cu. ft. of a highly controlled incubation environment, and a tremendous amount of usable space, all in a conveniently small footprint. These units are stackable with stand, and shelving is easily removable without tools for a rapid wipe down.

R Series: The full-featured R unit includes a large 5.3" (13.5 cm) intuitive controller with on-board data logging and simple access to alarms and settings, and allows complete access to the full range of upgrades including the new AHS and Cooling modules as well as O₂ control and High-Temperature Disinfection.

S Series: A full-featured unit with an LED control system and High-Temperature Disinfection.

Volume: 170L, 6.0 cu. ft.

Shelves: 4 Shelves

External Dimensions: 27" W x 26.7" D x 33.2" H,
(68.7 x 68 x 84.4 cm)

Internal Dimensions: 21" W x 17.5" D x 27.2" H,
(54 x 44.4 x 69.3 cm)

Weight: 198 lbs. (90 kg)

Range: 4°C above Ambient to 50°C

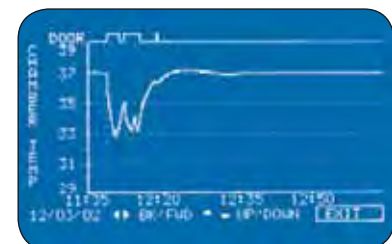
Uniformity: +/- 0.2°C

Certification: CE



Galaxy 170 R

Model	Catalog No. for 120V	Catalog No. for 230V	Factory Installed Options	Price
Galaxy® 170 R	CO170R-120-0000	CO170R-230-0000		\$ 6,589
	CO170R-120-1000	CO170R-230-1000	High-Temp Disinfection	7,321
	CO170R-120-0200	CO170R-230-0200	1 - 19% O ₂ Control	8,053
	CO170R-120-1200	CO170R-230-1200	High-Temp Disinfection, 1 - 19% O ₂ Control	8,786
Galaxy® 170 S	CO170S-120-0000	CO170S-230-0000		5,271
	CO170S-120-1000	CO170S-230-1000	High-Temp Disinfection	5,857



Galaxy R Series incubators feature a large back-lit display, providing a detailed record of chamber conditions – including an automated 72-hr. record of historical data.

For more options and configurations see page 42.

PERSONAL-SIZED CO₂ INCUBATORS**NEW****Galaxy® 48 R & S,
48 Liter / 1.7 cu. ft. Capacity**

Galaxy 48 R & S Incubators are specifically designed for smaller laboratories and applications requiring a higher level of isolation. They provide many of the same standard features as the 170 Series, and include a viewing window on the outside door, to provide sophisticated performance in a smaller package.

R Series: Offers large 5.3" (13.5 cm) LCD intuitive interface with 72-hour data logging and easy access to setpoints and alarms. This unit is upgradeable with many options including O₂ control and High-Temperature Disinfection.

S Series: A full-featured unit with an LED control system.

Volume: 48 L, 1.7 cu. ft.

Shelves: 3 Shelves

External Dimensions: 19" W x 18.7" D x 25.4" H,
(48.4 x 47.5 x 64.5 cm)

Internal Dimensions: 15.8" W x 12" D x 15.8" H,
(40.1 x 30.8 x 40.1 cm)

Weight: 71 lbs. (32 kg)

Range: 4°C above Ambient to 50°C

Uniformity: +/- 0.2°C

Certification: CE



Galaxy 48 R

Model	Catalog No. for 120V	Catalog No. for 230V	Factory Installed Options	Price
Galaxy® 48 R	CO48R-120-0000	CO48R-230-0000		\$ 4,979
	CO48R-120-1000	CO48R-230-1000	High-Temp Disinfection	5,711
	CO48R-120-0200	CO48R-230-0200	1 - 19% O ₂ Control	6,589
	CO48R-120-1200	CO48R-230-1200	High-Temp Disinfection, 1 - 19% O ₂ Control	7,321
Galaxy® 48 S	CO48S-120-0000	CO48S-230-0000		4,246

For more options and configurations see page 43.

MICRO-SIZED CO₂ INCUBATOR

Galaxy® 14 S, 14 Liter/0.5 cu. ft. Capacity

The unique Galaxy 14 S, originally designed for the IVF market, is ideal for isolation of sensitive cultures. Its compact size allows the unit to be placed directly in your work area and its 0.5 cu.ft. capacity allows for an enhanced uniformity and temperature specification.

S Series: The 14 S offers compact CO₂ culture capability in a package that does not intrude on your valuable laboratory space. Also available with a 1 - 19% O₂ control option, ideal for IVF and stem cell applications.

Volume: 14 L, 0.5 cu. ft.

Shelves: 2 Shelves

External Dimensions: 12.3" W x 11" D x 17.8" H,
(31.3 x 28.5 x 45.1 cm)

Internal Dimensions: 9.2" W x 8.2" D x 11.5" H,
(23.3 x 20.8 x 29.2 cm)

Weight: 28 lbs. (12.5 kg)

Range: 4°C above Ambient to 50°C

Uniformity: +/- 0.2°C

Certification: CE




Model	Catalog No. for 120V	Catalog No. for 230V	Factory Installed Options	Price
Galaxy® 14 S	CO14S-120-0000	CO14S-230-0000		\$ 3,441
	CO14S-120-0200	CO14S-230-0200	1 - 19% O ₂ Control	5,125

For more options and configurations see page 43.

INCUBATOR OPTIONS AND ACCESSORIES

Galaxy Incubator Model **	170 R		170 S	
Standard, 120V	CO170R-120-0000	\$ 6,589	CO170S-120-0000	\$ 5,271
Standard, 230V	CO170R-230-0000	\$ 6,589	CO170S-230-0000	\$ 5,271
With High-Temp. Disinfection, 120V	CO170R-120-1000	\$ 7,321	CO170S-120-1000	\$ 5,857
With High-Temp. Disinfection, 230V	CO170R-230-1000	\$ 7,321	CO170S-230-1000	\$ 5,857
With 1 - 19% O ₂ Control, 120V	CO170R-120-0200	\$ 8,053	—	—
With 1 - 19% O ₂ Control, 230V	CO170R-230-0200	\$ 8,053	—	—
With High-Temp. & 1 - 19% O ₂ Control, 120V	CO170R-120-1200	\$ 8,786	—	—
With High-Temp. & 1 - 19% O ₂ Control, 230V	CO170R-230-1200	\$ 8,786	—	—
Additional Factory-Installed Options				
O ₂ Control, 0.1 - 19%	P0628-5410	\$ 3,244	—	—
O ₂ Control, 1 - 95%	P0628-5400	\$ 2,798	—	—
Cooling System (below ambient) ø	P0628-6810	\$ 3,097	—	—
Active Humidification ø	P0628-6800	\$ 2,229	—	—
Building Management System Relays	P0628-5540	\$ 214	P0628-5651	\$ 214
Single Inner Glass Door	Standard	—	Standard	—
Split Inner Doors - 2	—	—	—	—
Split Inner Doors - 4	P0628-6780	\$ 1,154	P0628-6780	\$ 1,154
Split Inner Doors - 8	P0628-6781	\$ 1,731	P0628-6781	\$ 1,731
Humidity Alert Package (Display and Alarm)	P0628-6820	\$ 1,701	—	—
Internal Sealed Power Supply (IP66)	P0628-5560	\$ 727	P0628-5560	\$ 727
Copper Chamber	P0628-5612	\$ 3,244	P0628-5612	\$ 3,244
Accessories – Gas Management & Analysis				
Two Stage CO ₂ Regulator	P0628-5010	\$ 420	P0628-5010	\$ 420
Two Stage N ₂ Regulator	P0628-7220	\$ 432	—	—
CO ₂ Supply Line HEPA Filters (2)	P0628-5020	\$ 87	P0628-5020	\$ 87
CO ₂ In-line Pressure Regulator	P0628-5030	\$ 140	P0628-5030	\$ 140
CO ₂ Cylinder Auto-Changeover Controller	P0628-5000	\$ 1,133	P0628-5000	\$ 1,133
Auto-Zero HEPA Filters (5)	P0628-5060	\$ 54	P0628-5060	\$ 54
CO ₂ Gas Analyzer Kit	P0628-5040	\$ 782	P0628-5040	\$ 782
Spare CO ₂ Gas Analyzer Tubes (10)	P0628-5050	\$ 119	P0628-5050	\$ 119
Electronic CO ₂ Gas Analyzer	P0628-6150	\$ 1,710	P0628-6150	\$ 1,710
Electronic CO ₂ & O ₂ Gas Analyzer	P0628-6831	\$ 2,209	P0628-6831	\$ 2,209
Electronic CO ₂ & O ₂ Gas A. w/ °C & RH meas.	P0628-6832	\$ 3,058	P0628-6832	\$ 3,058
Calibration Gas 5%, 20L Disposable Canister	P0628-7211	\$ 83	P0628-7211	\$ 83
Control Valve & Flow Indicator for 20L Canister	P0628-6061	\$ 83	P0628-6061	\$ 83
Calibration Gas 5%, 105L Disposable Canister	P0628-7210	\$ 215	P0628-7210	\$ 215
0.3L/min Flow Regulator w/ pressure Gauge†	P0628-7221	\$ 229	P0628-7221	\$ 229
Accessories – Shelves, Pans & Stacking Stand				
Multi-Position Shelf Rack	Standard	—	P0628-6390	\$ 233
Additional Shelf, non-perforated	P0628-6241	\$ 150	P0628-6241	\$ 150
Additional Shelf, perforated	P0628-6251	\$ 175	P0628-6251	\$ 175
Lower and Upper Stacking Frame, with casters	P0628-6270	\$ 562	P0628-6270	\$ 562
Lower Stacking Frame, with casters	P0628-6490	\$ 268	P0628-6490	\$ 268
Upper Stacking Frame	—	—	—	—
Stacking Frame for Stacking 2 Incubators	—	—	—	—
Accessories – Electronics & Software				
BioCommand® SFI Software*	M1291-0054	CALL	M1291-0054	CALL

**Catalog numbers subject to change without notice. Additional incubator configurations are also available. Ordering them, or ordering custom options, will affect delivery and shipping. Not all options are compatible. Ask your local NBS Sales Rep for quotation. All models are 50/60 Hz units. * Call for availability.

(†) For Reusable 105 Liter cylinder. (ø) Please check availability before ordering. Cooling option cannot be combined with High-Temperature Disinfection options.

Galaxy Incubator Model **	48 R		48 S		14 S	
Standard, 120V	CO48R-120-0000	\$ 4,979	CO48S-120-0000	\$ 4,246	CO14S-120-0000	\$ 3,441
Standard, 230V	CO48R-230-0000	\$ 4,979	CO48S-230-0000	\$ 4,246	CO14S-230-0000	\$ 3,441
With High-Temp. Disinfection, 120V	CO48R-120-1000	\$ 5,711	—	—	—	—
With High-Temp. Disinfection, 230V	CO48R-230-1000	\$ 5,711	—	—	—	—
With 1 - 19% O ₂ Control, 120V	CO48R-120-0200	\$ 6,589	—	—	CO14S-120-0200	\$ 5,125
With 1 - 19% O ₂ Control, 230V	CO48R-230-0200	\$ 6,589	—	—	CO14S-230-0200	\$ 5,125
With High-Temp. & 1 - 19% O ₂ Control, 120V	CO48R-120-1200	\$ 7,321	—	—	—	—
With High-Temp. & 1 - 19% O ₂ Control, 230V	CO48R-230-1200	\$ 7,321	—	—	—	—
Additional Factory-Installed Options						
O ₂ Control, 0.1 - 19%	P0628-6280	\$ 3,244	—	—	—	—
O ₂ Control, 1 - 95%	P0628-5260	\$ 2,798	—	—	—	—
Cooling System (below ambient) ø	—	—	—	—	—	—
Active Humidification ø	—	—	—	—	—	—
Building Management System Relays	P0628-5340	\$ 214	P0628-5341	\$ 225	P0628-6300	\$ 214
Single Inner Glass Door	—	—	—	—	P0628-6210	\$ 254
Split Inner Doors - 2	P0628-5330	\$ 738	P0628-5330	\$ 738	—	—
Split Inner Doors - 4	—	—	—	—	—	—
Split Inner Doors - 8	—	—	—	—	—	—
Humidity Alert Package (Display and Alarm)	P0628-6770	\$ 1,665	—	—	—	—
Internal Sealed Power Supply (IP66)	P0628-5350	\$ 727	P0628-5350	\$ 727	—	—
Copper Chamber	—	—	—	—	—	—
Accessories – Gas Management & Analysis						
Two Stage CO ₂ Regulator	P0628-5010	\$ 420	P0628-5010	\$ 420	P0628-5010	\$ 420
Two Stage N ₂ Regulator	P0628-7220	\$ 432	—	—	P0628-7220	\$ 432
CO ₂ Supply Line HEPA Filters (2)	P0628-5020	\$ 87	P0628-5020	\$ 87	P0628-5020	\$ 87
CO ₂ In-line Pressure Regulator	P0628-5030	\$ 140	P0628-5030	\$ 140	P0628-5030	\$ 140
CO ₂ Cylinder Auto-Changeover Controller	P0628-5000	\$ 1,133	P0628-5000	\$ 1,133	P0628-5000	\$ 1,133
Auto-Zero HEPA Filters (5)	P0628-5060	\$ 54	P0628-5060	\$ 54	P0628-5060	\$ 54
CO ₂ Gas Analyzer Kit	P0628-5040	\$ 782	P0628-5040	\$ 782	P0628-5040	\$ 782
Spare CO ₂ Gas Analyzer Tubes (10)	P0628-5050	\$ 119	P0628-5050	\$ 119	P0628-5050	\$ 119
Electronic CO ₂ Gas Analyzer	P0628-6150	\$ 1,710	P0628-6150	\$ 1,710	P0628-6150	\$ 1,710
Electronic CO ₂ & O ₂ Gas Analyzer	P0628-6831	\$ 2,209	P0628-6831	\$ 2,209	P0628-6831	\$ 2,209
Electronic CO ₂ & O ₂ Gas A. w/ °C & RH meas.	P0628-6832	\$ 3,058	P0628-6832	\$ 3,058	P0628-6832	\$ 3,058
Calibration Gas 5%, 20L Disposable Canister	P0628-7211	\$ 83	P0628-7211	\$ 83	P0628-7211	\$ 83
Control Valve & Flow Indicator for 20L Canister	P0628-6061	\$ 83	P0628-6061	\$ 83	P0628-6061	\$ 83
Calibration Gas 5%, 105L Disposable Canister	P0628-7210	\$ 215	P0628-7210	\$ 215	P0628-7210	\$ 215
0.3L/min Flow Regulator w/ pressure Gauge†	P0628-7221	\$ 229	P0628-7221	\$ 229	P0628-7221	\$ 229
Accessories – Shelves, Pans & Stacking Stand						
Multi-Position Shelf Rack	P0628-5100	\$ 284	P0628-5100	\$ 284	P0628-6170	\$ 284
Additional Shelf, non-perforated	P0628-5070	\$ 94	P0628-5070	\$ 94	P0628-6180	\$ 94
Additional Shelf, perforated	P0628-5080	\$ 94	P0628-5080	\$ 94	P0628-7200	\$ 132
Lower and Upper Stacking Frame, with casters	P0628-5091	\$ 625	—	—	—	—
Lower Stacking Frame, with casters	P0628-5090	\$ 550	P0628-5090	\$ 550	—	—
Upper Stacking Frame	P0628-6720	\$ 147	P0628-6720	\$ 147	—	—
Stacking Frame for Stacking 2 Incubators	—	—	—	—	P0628-6230	\$ 243
Accessories – Electronics & Software						
BioCommand® SFI Software*	M1291-0054	CALL	M1291-0054	CALL	M1291-0054	CALL

**Catalog numbers subject to change without notice. Additional incubator configurations are also available. Ordering them, or ordering custom options, will affect delivery and shipping. Not all options are compatible. Ask your local NBS Sales Rep for quotation. All models are 50/60 Hz units. * Call for availability.

(†) For Reusable 105 Liter cylinder. (ø) Please check availability before ordering. Cooling option cannot be combined with High-Temperature Disinfection options.

Please consult your NBS sales representative for assistance selecting the right combination for your lab.

AUTOMATED DATA LOGGING SOFTWARE / ROLLER DRUMS

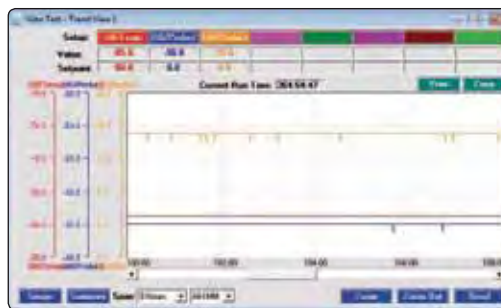


BioCommand® SFI Data-Logging Software

BioCommand® SFI Track and Trend Software: The BioCommand SFI software package is designed specifically for standard laboratory equipment including Shakers, CO₂ Incubators and ULT Freezers*. The software package allows you to track key operational information such as time, temperature, shaking speed, CO₂ concentrations and humidity.

Features:

- Design and save templates designed to track the operational parameters you select.
- Monitor multiple units from the same PC.
- Trend and archive critical data including temperature, agitation speed and gas concentration for up to 32 units simultaneously.
- Provides indications of alarm conditions identified by the product.
- Graphical representation of the output.



Model	Catalog No.	
BioCommand® SFI	M1291-0054	CALL for Availability
Cable for Shakers	M1293-8021	
Cable for Freezers	M1293-8022	
Cable for CO ₂ Incubators	M1293-8023	

(*) Units must have RS-232, RS-422 or USB port.

Tissue/Microbial Culture Roller Drum, TC-7 & TC-8

Precision tool designed for the growth of tissue and bacterial cultures by the roller tube method.

Interchangeable Drums: accommodate 13 mm, 16 mm, 18 mm & 25 mm test tubes and 50 mL centrifuge tubes. Drums sold separately.

Speed: 6 to 56 rpm in Model TC-7 and 0.2 to 3.5 in Model TC-8.

Overall dimensions: 15" W x 13.5" D x 18" H max. (Height varies dependent on angle adjustment; 37.4 x 34 x 46 cm).

Net weight: 16 lbs. (7.3 kg).



Model	Catalog No.	Speed (RPM)	Electrical Service	Price
TC-7	M1053-4004	6 - 56	120V, 50/60Hz	\$ 1,975
	M1053-4005	6 - 56	220/230V, 50/60Hz	
TC-8	M1053-5004	0.2 - 3.5	120V, 50/60Hz	
	M1053-5005	0.2 - 3.5	220/230V, 50/60Hz	

Interchangeable Roller Drums, 14" (36 cm) diameter

Catalog No.	Description	Price
ATC-TT16	Holds 164 test tubes 16 mm and smaller	\$ 523
M1053-0450	Holds 164 test tubes 18 mm and smaller	524
ATC-TT25	Holds 80 test tubes 25 mm and smaller	523
M1053-0360	Holds 46 size 50 mL centrifuge tubes, 30 mm and smaller	524
M1053-0306	Holds 311 test tubes, 13 mm diameter x 100 mm length	524

ORDERING INFORMATION

To Place Orders

New Brunswick Scientific (NBS) maintains sales and service offices throughout the world. In North America, please place your order with our headquarters office shown below. Elsewhere, please contact your local NBS office (listed on the back cover of this catalog) or contact your local NBS distributor.

New Brunswick Scientific Headquarters

PO Box 4005, 44 Talmadge Road
Edison, NJ 08818-4005, USA

Customer Service Phone

N. America: 1 800 631 5417
Elsewhere: +1 732 287 1200, 2

Fax

N. America: 1 800 489 1400
Elsewhere: +1 732 248 0589

Email Orders

orders@nbsc.com

Specify

- Model number/name
- Catalog number
- Electrical service

Provide

- Bill To and Ship To addresses
- Contact name and Email address for order acknowledgement
- Quote number, if applicable
- See also paragraph under "Shipping"

Orders will be promptly acknowledged via e-mail, indicating the date of anticipated shipment and price.

Product Specifications

Specifications of the products described in this catalog are subject to change without notice. Such changes may result from our long-standing commitment to improve performance, and extend the service life and applications of our products. NBS may change product design and specifications at any time without incurring obligation. To ensure that the equipment meets your individual requirements, up-to-date specifications will be incorporated in formal quotations to afford you a means for final review and approval of the equipment before making a purchase. Photos shown are for illustration purposes and are not shown to scale.

Credit Cards

In North America, NBS accepts VISA, MasterCard and American Express.

Shipping

Freight charges are pre-paid and added to invoice, unless you specify otherwise. Orders are shipped via best method, or you may designate a specific carrier, mode of shipment, and/or inside delivery to a location other than the receiving dock. Please also specify if your loading dock requires a truck with lift gate.

Spare Parts Kits

To eliminate downtime, a supply of expendable replacement parts should be available at all times for uninterrupted operation of major equipment. Most products are available with optional kits of recommended spare parts to make expendable components immediately available should you need them. The kits are listed under "Accessories" for each product. Standard kits contain parts such as fuses, belts, O-rings, gaskets, membranes, filters, motor brushes, ball bearings, etc. More comprehensive kits contain a larger number of spare parts, including bearing housings, valves, motors and circuit boards. Each kit varies, depending on the equipment's electrical service and year of manufacture. For a description of Kit contents, contact your local sales representative and specify the equipment serial number and electrical service, or use our convenient online form at www.nbsc.com/service.

Equipment Returns

- If for any reason you need to return your NBS equipment, you must first obtain a Return Material Authorization (RMA) from your local NBS sales office.
- If the equipment arrived damaged, immediately contact the transit carrier to file a claim.
- If returning your equipment for repair, an "Equipment Return Material Authorization (RMA) and Decontamination Certificate" must be filled out and attached to the carton, and a second copy must be attached to the unit. Forms are available online at www.nbsc.com under the "How Can We Help" tab.

WARRANTY INFORMATION

Warranty

New Brunswick Scientific's equipment is protected by a comprehensive warranty. The warranty covers faulty components and assembly, and our obligation under this warranty is limited to repairing or replacing the instrument or part thereof, which shall prove to be defective after our examination. The NBS warranty does not cover loss of time or materials, such as the loss of biological or biochemical by-products caused by any work interruption resulting from equipment failure; it does not extend to equipment that has been subject to misuse, neglect, accident or improper installation or application; nor does it cover any machine that has been repaired or altered by anyone other than an authorized NBS factory-trained service representative, without prior approval from your local NBS sales office. Expendable items such as bearings and seals, lamps, probes, sensors including incubator sensors, glass, filters, etc., are not covered. The warranty begins on the date the equipment ships and extends for a period as per the chart below.

Warranty Registration

To register your warranty with NBS, complete the on-line form at www.nbsc.com under the "How Can We Help?" tab, or use the warranty card enclosed with your equipment.

Extended Warranty Option

A variety of service plans are offered to help minimize downtime from unexpected malfunctions in equipment operation. See pages 97 - 98 for details.

Instrument		Parts Warranty	Labor Warranty
Shakers	Innova	3 Years	2 Years
	I Series	2 Years	2 Years
	Excella & C-76	2 Years	2 Years
	Accessories*	1 Year	1 Year
Incubators	CO ₂ Incubators:	2 Years	2 Years
	Accessories†	1 Year	1 Year
Freezers	ULT Freezers	5 Years VIP panels: 12 years	2 Years
	Accessories‡	1 Year	1 Year
Fermentors, Bioreactors & All other NBS Equipment		1 Year	1 Year

(*) Chart recorders, photosynthetic light banks, etc.

(†) Stacking stand, casters, shelves, etc.

(‡) Chart recorders, CO₂/LN₂ back up systems, etc.

NBS EQUIPMENT SERVICE PLANS

Protect Your Investment

NBS offers a variety of service options to keep your equipment up and running, and your research and production schedules on track. We can accommodate virtually any budget, through a choice of service plans.

What we provide

- Electrical, electronic and mechanical safety checks
- Problem analysis, complete functional check-up and testing of all systems
- Functional checks of sensors and instrumentation
- For details, see next page

Why choose NBS

- Training, experience, and know-how. We hire only seasoned service professionals and provide year-round, on-going training, both in our factory and the field, to ensure that we maintain the best-trained service staff in the industry.
- Parts inventory. We maintain an extensive inventory of replacement parts, strategically located throughout the globe, for rapid response to your needs.
- Scheduling capabilities. Our computerized management system for service scheduling has been upgraded to provide an even higher level of customer satisfaction, and we continue to work on new ways to improve our support to you.
- Special pricing. We offer a discount on parts with preventive maintenance contracts, as well as discounts for multiple units under contract.



Extended Warranty

This plan is a one-year extension of the original equipment warranty; it includes parts and labor as needed.

- Equipment covered: all currently sold NBS products
- Length of contract: 12 months after the expiration of original warranty
- When to purchase: at the time of equipment purchase

Repair Service On-Call

NBS also offers on-call repair service – no contracts needed! Simply contact your local NBS representative for details.

Service Contracts

Service contracts are designed to keep NBS equipment in top-running condition.

- Equipment covered: all current- and recent-model NBS equipment. Ask your NBS sales or service representative for details.
- Length of contract: 12 months
- When to purchase: any time, products may be subject to NBS' equipment inspection and mutual acceptance.

NBS EQUIPMENT SERVICE PLANS

Maintenance Support for Your NBS Equipment

In order to ensure your equipment remains in peak operating condition, we recommend performing a checkup of your equipment's components and performance at regularly-scheduled intervals. Our factory-trained team of service personnel and authorized third-party service organizations can offer these services to you. Checkups vary by product model, but generally include comprehensive inspection and testing of the parts outlined below.

Freezers: -85°C and -45°C

- Actual/target temperature comparison
- Condenser and compressor
- Fixed lines and pipes
- Lid or door seals
- CO₂ or LN₂ emergency cooling system
- Electrical safety
- Additional test protocols may be performed as needed

Shakers: Innova®, Excella®, C-Line and I Series models

- Electrical (mains) connection
- Control of rotational frequency
- Temperature regulation
- Ventilator, shaker gear, motor drive wheels
- Motor brushes & V-belt
- Electrical safety
- Function key, thermostats, and rectifier
- Display elements
- Condenser, evaporator and ventilation filter units
- Controller functions
- Lid and door hinges, joints or seals
- Additional test protocols may be performed as needed

CO₂ Incubators

- Electrical (mains) connection
- Rubber seals and water trays
- Fan
- Door switch
- Sensors for temperature and CO₂
- Electrical safety
- Alarms
- Gas ports and their supply lines
- Valves, relays, and filter
- Additional test protocols may be performed as needed

Fermentors and Bioreactors

(We currently offer service for the following models: BioFlo®: 110, 115, 310, 3000, 410, 415, 4500, 5000, 510, 610 and Pro fermentors & CelliGen™: 115, 310, 510, Plus, BLU and Pro bioreactors)

- Operating controls, switches, signal lights, fuse holders, fuses
- Electrical safety
- Water circulation, water feed pump
- Impeller shaft seal, Impeller drive motor, bearing housing, ball bearing, seals
- Gas mixing units
- Thermal mass flow meters/ controllers
- Supply voltages, buffer battery of the electronic board
- Solenoid valves, steam traps, sampling and supply valves, swivel valves, exhaust valves
- Inspection or illumination windows, O-rings,
- Steam connections, air connections and water connections, excess temperature fuse
- V-belt, tube switch
- Tube pressure regulator, bearing housing
- Cell-Lift impeller
- Heating
- Drive motor, magnetic coupling
- Additional test protocols may be performed as needed

INDEX BY CATALOG NUMBER

NBS Part No.	Page
ACE-1000S	10
ACE-10S	10
ACE-2000S	10
ACE-3000S	10
ACE-4000S	10
ACE-5000S	10
ACE-6000S	10
ACFE-2800S	10
ACSB-1000S	10
ACSB-500S	10
AG-00	13, 20, 25
AG-1	13, 20, 25
AG-2	13, 20, 25
AG2-00	19, 28
AG2-10	19, 28
AG-21-00	21
AG-28	13, 20, 25
AG2-UT	19, 28
AG-4	13, 20, 25
AG-6	13, 20, 25
AG7-125	17, 29
AG7-250	17, 29
AG7-50	17, 29
AG7-TT13	17, 29
AG7-TT16	17, 29
AG7-TT20	17, 29
AG7-TT25	17, 29
ATC-TT16	44
ATC-TT25	44
B50-SQ	36
B75-SQ	36
B95-SQ	36
CO14S-120-0000	41
CO14S-120-0200	41
CO14S-230-0000	41
CO14S-230-0200	41
CO170R-120-0000	39
CO170R-120-0200	39
CO170R-120-1000	39
CO170R-120-1200	39
CO170R-230-0000	39
CO170R-230-0200	39
CO170R-230-1000	39
CO170R-230-1200	39
CO170S-120-0000	39
CO170S-230-0000	39
CO170S-230-1000	39
CO48R-120-0000	40
CO48R-120-0200	40
CO48R-120-1000	40
CO48R-120-1200	40
CO48R-230-0000	40
CO48R-230-0200	40
CO48R-230-1000	40
CO48R-230-1200	40
CO48S-120-0000	40
CO48S-230-0000	40
D100	36

NBS Part No.	Page
D49	36
D64	36
D81	36
K0200-0506	33
K0280-1030	36
K0280-1031	36
K0280-1034	36
K0280-1036	36
K0440-0355	36
K0540-0025	36
K0641-1690	37
K0641-1700	37
K0641-1750	37
K0641-1880	37
K0641-1890	37
K0641-1900	37
K0641-3000	37
K0641-3001	37
K0641-3002	37
K0641-3003	37
K0641-3004	37
K0641-3005	37
K0660-0051	36
M1001-0240	19, 28
M1001-9920	19, 28
M1016-0890	92
M1016-0900	92
M1020-1220	17
M1053-0306	44
M1053-0360	44
M1053-0450	44
M1053-4004	44
M1053-4005	44
M1053-5004	44
M1053-5005	44
M1117-2040	14, 19, 20, 21, 24, 27
M117-8010	85
M1131-8009	92
M1131-8010	90
M1153-9633	80
M1153-9639	80
M1171-8010	85
M1176-9540	92
M1176-9575	92
M1176-9579	92
M1190-0000	18
M1190-0000	18
M1190-0001	18
M1190-0001	18
M1190-0002	18
M1190-0002	18
M1190-0003	18
M1190-0010	18
M1190-0011	18
M1190-0012	18
M1190-0013	18
M1190-6100	19
M1190-9000	10

NBS Part No.	Page
M1190-9001	10
M1190-9002	10
M1190-9003	10
M1190-9004	10
M1190-9005	10
M1190-9900	19
M1190-9901	19
M1190-9902	19
M1190-9903	19
M1190-9904	19
M1190-9905	19
M1190-9906	19
M1190-9907	19
M1190-9908	19
M1190-9909	19
M1190-9910	19
M1190-9911	19
M1190-9915	19, 28
M1190-9916	19, 28
M1190-9917	19, 28
M1190-9918	19, 28
M1190-9919	19, 28
M1190-9920	19
M1191-0000	18
M1191-0001	18
M1191-0002	18
M1191-0003	18
M1191-0010	18
M1191-0011	18
M1191-0012	18
M1191-0013	18
M1191-0020	18
M1191-0021	18
M1191-0022	18
M1191-0023	18
M1191-0030	18
M1191-0031	18
M1191-0032	18
M1191-0033	18
M1191-6102	21
M1191-9904	21
M1191-9905	20
M1191-9908	13, 20, 25
M1191-9909	13, 20, 25
M1191-9910	13, 20, 25
M1191-9911	13, 20, 25
M1191-9912	21
M1191-9913	21
M1191-9914	21
M1192-6002	15
M1192-9901	14, 20, 24
M1194-0000	18
M1194-0001	18
M1194-0002	18
M1194-0003	18
M1194-0010	18
M1194-0011	18
M1194-0012	18

NBS Part No.	Page
M1194-0013	18
M1194-6001	20
M1194-9903	14, 19, 27
M1194-9904	14, 19, 24, 27
M1194-9905	14, 19, 24, 27
M1194-9906	14, 19, 24, 27
M1194-9907	14, 19, 24, 27
M1194-9908	14, 19, 20, 24, 27
M1194-9909	14, 19, 24, 27
M1194-9910	14, 19, 24, 27
M1194-9912	20
M1194-9915	20
M1194-9916	20
M1194-9917	20
M1194-9918	20
M1194-9919	20
M1194-9920	20
M1194-9921	20
M1194-9922	20
M1194-9923	14, 19, 24, 27
M1194-9924	20, 21
M1194-9925	20
M1194-9926	20
M1194-9927	20
M1195-1020	17
M1196-0000	21
M1196-0001	21
M1196-0002	21
M1196-0003	21
M1196-6000	22
M1196-9447	22
M1196-9900	22
M1196-9901	22
M1196-9902	22
M1196-9903	22
M1196-9904	22
M1196-9905	22
M1196-9906	22
M1196-9907	22
M1224-0001	46
M1224-0002	46
M1224-0005	46
M1224-0006	46
M1224-0100	46
M1224-0110	46
M1224-0160	46
M1224-3000	46
M1224-9200	46
M1224-9740	46
M1226-9446	92
M1227-9231	64, 65
M1228-5014	49
M1228-8001	80
M1230-3030	60
M1231-0000	16
M1231-0001	16
M1231-0002	16
M1231-0003	16

INDEX BY CATALOG NUMBER

NBS Part No.	Page	NBS Part No.	Page	NBS Part No.	Page	NBS Part No.	Page
M1231-0730	17	M1273-3215	60	M1282-0003	11	M1287-0331	67
M1231-2000	17, 29	M1273-3220	60	M1282-0004	11	M1287-0332	67
M1231-2010	17, 29	M1273-5001	64, 69, 72	M1282-0005	11	M1287-0333	67
M1231-6000	17, 29	M1273-5002	64, 69, 72	M1282-0006	11	M1287-0400	63, 67
M1231-9920	17, 29	M1273-5003	60	M1282-0007	11	M1287-0401	63, 67
M1231-9930	16, 29	M1273-5004	60	M1282-0010	11	M1287-0402	63, 67
M1231-9933	16, 29	M1273-5005	60	M1282-0011	11	M1287-0403	63, 67
M1231-9934	16, 29	M1273-5006	60	M1282-0012	11	M1287-0410	63
M1231-9935	16, 29	M1273-5007	60	M1282-0013	11	M1287-0411	63
M1231-9936	16, 29	M1273-5040	60	M1282-0014	11	M1287-0412	63
M1231-9937	16, 29	M1273-5042	59	M1282-0015	11	M1287-0413	63
M1231-9938	16, 29	M1273-5054	60	M1282-0016	11	M1287-0674	67
M1231-9939	16, 29	M1273-5058	60	M1282-0017	11	M1287-0675	67
M1232-0100	22	M1273-9206	72	M1282-0291	12	M1287-0676	67
M1232-0101	22	M1273-9207	60	M1282-0500	12	M1287-1002	68
M1232-0110	22	M1273-9212	64	M1282-0501	12	M1287-1003	63
M1232-0111	22	M1273-9266	60	M1282-0600	12	M1287-1004	68
M1233-9930	14	M1273-9293	60	M1282-0700	12	M1287-1005	63
M1233-9932	14, 20, 24	M1273-9291	60	M1282-0800	12	M1287-1010	63, 67
M1238-8001	90	M1273-9292	60	M1282-5011	12	M1287-1020	63, 67
M1240-1000	46	M1273-9293	60	M1282-6000	12, 13	M1287-1110	69
M1243-2500	13, 21, 25	M1273-9405	60	M1282-8038	12	M1287-1111	69
M1248-0002	28	M1273-9406	60	M1282-9904	11	M1287-1112	69
M1248-0003	28	M1273-9407	60	M1282-9905	11	M1287-1113	69
M1248-0730	29	M1273-9575	60	M1282-9906	11	M1287-1125	69
M1250-9504	10	M1273-9900	60	M1282-9907	11	M1287-1126	69
M1250-9600	10	M1273-9901	60	M1282-9908	11	M1287-1127	69
M1250-9700	10	M1273-9902	60	M1282-9909	11	M1287-1128	69
M1250-9902	14, 19, 24, 27	M1273-9907	59	M1282-9910	11	M1287-1135	69
M1250-9903	14, 19, 20, 24, 27	M1273-9908	59	M1282-9911	11	M1287-1136	69
M1250-9904	13, 20, 25	M1273-9909	59	M1282-9913	11	M1287-1137	69
M1250-9906	14, 19, 24, 27	M1273-9915	59	M1282-9915	11	M1287-1138	69
M1250-9920	13, 20, 25	M1273-9916	59	M1282-9921	12	M1287-1140	69
M1250-9921	20, 25	M1273-9917	59	M1282-9922	12	M1287-1141	69
M1266-0000	83	M1273-9918	59	M1282-9925	11	M1287-1142	69
M1266-0001	83	M1273-9919	59	M1282-9926	11	M1287-1143	69
M1273-3031	60	M1273-9930	61	M1282-9927	11	M1287-1150	69
M1273-3100	61	M1273-9931	61	M1282-9928	11	M1287-1170	62
M1273-3102	61	M1273-9932	61	M1286-0100	85	M1287-1171	62
M1273-3103	61	M1273-9933	61	M1286-8010	85	M1287-1172	62
M1273-3104	61	M1273-9936	60	M1287-0020	64, 69, 85	M1287-1173	62
M1273-3106	61	M1273-9940	60	M1287-0101	64	M1287-1174	62
M1273-3107	61	M1273-9945	60	M1287-0102	64	M1287-1175	62
M1273-3108	61	M1273-9946	60	M1287-0111	69	M1287-1176	62
M1273-3109	61	M1273-9949	60	M1287-0114	69	M1287-1177	62
M1273-3110	61	M1273-9953	60	M1287-0300	63	M1287-1185	70
M1273-3112	61	M1273-9956	60	M1287-0301	63	M1287-1186	70
M1273-3116	61	M1273-9957	60	M1287-0302	63	M1287-1187	70
M1273-3120	61	M1273-9961	60	M1287-0303	63	M1287-1188	70
M1273-3125	61	M1273-9989	64	M1287-0310	67	M1287-1190	69
M1273-3130	61	M1273-9990	64	M1287-0311	67	M1287-1191	69
M1273-3135	61	M1273-9998	60	M1287-0312	67	M1287-1192	69
M1273-3201	60	M1273-9999	60	M1287-0313	67	M1287-1193	69
M1273-3202	60	M1276-0000	84	M1287-0320	63	M1287-1200	63
M1273-3205	60	M1276-5000	84	M1287-0321	63	M1287-1201	63
M1273-3210	60	M1282-0000	11	M1287-0322	63	M1287-1202	63
M1273-3211	60	M1282-0001	11	M1287-0323	63	M1287-1203	68
M1273-3212	60	M1282-0002	11	M1287-0330	67	M1287-1204	68

INDEX BY CATALOG NUMBER

NBS Part No.	Page	NBS Part No.	Page	NBS Part No.	Page	NBS Part No.	Page
M1287-1205	63	M1287-6022	64	M1290-0550	81	M1320-0004	12
M1287-1206	63	M1287-6023	64	M1290-0551	81	M1320-0005	12
M1287-1207	63	M1287-6030	70	M1290-0552	81	M1320-0006	12
M1287-1208	63	M1287-6031	70	M1290-0553	81	M1320-0007	12
M1287-1210	68	M1287-6032	70	M1290-0610	88, 90	M1320-0010	12
M1287-1211	68	M1287-6033	70	M1290-8012	88, 90	M1320-0011	12
M1287-1212	68	M1287-9212	64	M1291-0011	85	M1320-0012	12
M1287-1213	68	M1287-9227	70	M1291-0054	36, 42, 43, 44	M1320-0013	12
M1287-1260	66	M1287-9228	70	M1292-9984	48, 67	M1320-0014	12
M1287-1261	66	M1287-9229	70	M1292-9988	48, 67	M1320-0015	12
M1287-1262	66	M1287-9230	70	M1293-0020	82	M1320-0016	12
M1287-1263	66	M1287-9287	70	M1293-0100	82	M1320-0017	12
M1287-1264	66	M1287-9288	70	M1293-0900	82	M1320-0300	13
M1287-1265	66	M1287-9289	70	M1293-1000	82	M1320-0400	13
M1287-1266	66	M1287-9290	70	M1293-8021	44	M1320-0500	13
M1287-1267	66	M1287-9914	64	M1293-8022	44	M1320-0600	13
M1287-2010	63, 67	M1287-9915	64	M1293-8023	44	M1320-0700	13
M1287-2011	63, 67	M1287-9918	83	M1294-5013	72	M1320-6000	13
M1287-2012	63, 67	M1287-9920	69	M1294-5023	72	M1320-8029	13, 14, 15
M1287-2013	63, 67	M1287-9921	69	M1294-9542	72	M1322-0000	33, 36
M1287-2014	63, 67	M1287-9922	69	M1294-9544	72	M1322-0002	36
M1287-2015	67	M1287-9923	69	M1294-9820	72	M1324-0000	23
M1287-2016	63, 67	M1287-9930	64	M1294-9822	72	M1324-0001	23
M1287-2017	63, 67	M1287-9931	64	M1294-9824	72	M1324-0002	23
M1287-2018	63, 67	M1287-9932	64	M1294-9826	72	M1324-0003	23
M1287-2019	67	M1287-9933	64	M1294-9828	72	M1324-0004	23
M1287-2020	67	M1287-9950	70	M1294-9830	72	M1324-0005	23
M1287-2021	67	M1287-9951	70	M1294-9940	72	M1324-0006	23
M1287-2110	63, 67	M1287-9952	70	M1294-9941	72	M1324-0007	23
M1287-2111	63, 67	M1287-9953	70	M1294-9942	72	M1324-0500	23
M1287-2112	63, 67	M1287-9954	70	M1294-9943	72	M1324-0600	23
M1287-3500	69	M1287-9955	70	M1294-9944	72	M1324-0700	23
M1287-3501	64	M1287-9964	64	M1294-9945	72	M1324-0800	23
M1287-3505	69	M1287-9966	64, 69, 80	M1294-9948	72	M1324-9904	23
M1287-3510	63, 67	M1287-9967	64, 69	M1294-9954	72	M1324-9905	23
M1287-3520	63, 67	M1287-9985	70	M1295-0002	84	M1324-9906	23
M1287-3530	64, 69	M1287-9986	70	M1299-0061	15	M1324-9907	23
M1287-3540	63, 67	M1287-9987	70, 80	M1299-0080	15	M1324-9908	23
M1287-3550	69	M1287-9988	70	M1299-0081	15	M1324-9909	23
M1287-5010	70	M1289-0001	10	M1299-0082	15	M1324-9910	23
M1287-5011	70	M1289-0002	10	M1299-0083	15	M1324-9911	23
M1287-5012	70	M1289-0003	10	M1299-0084	15	M1325-0000	45
M1287-5013	70	M1289-0004	10	M1299-0085	15	M1325-0002	45
M1287-5030	64	M1289-0005	10	M1299-0086	15	M1325-2210	45
M1287-5031	64	M1289-0006	10	M1299-0087	15	M1326-0000	85
M1287-5034	64	M1289-0010	10	M1299-0090	15	M1326-0010	85
M1287-5042	64, 69	M1289-0020	10	M1299-0091	15	M1326-0020	85
M1287-5043	64	M1289-0030	10	M1299-0092	15	M1327-1000	49
M1287-5068	69	M1289-0040	10	M1299-0093	15	M1327-9980	49
M1287-5069	69	M1289-0050	10	M1299-0094	15	M1327-9981	49
M1287-5070	69	M1289-0060	10	M1299-0095	15	M1335-0000	14
M1287-5071	69	M1289-0100	10	M1299-0096	15	M1335-0001	14
M1287-5072	69	M1289-0200	10	M1299-0097	15	M1335-0002	14
M1287-5073	69	M1289-0300	10	M1299-6000	15	M1335-0003	14
M1287-5074	69	M1289-0400	10	M1320-0000	12	M1335-0004	14
M1287-5075	69	M1289-0500	10	M1320-0001	12	M1335-0005	14
M1287-6020	64	M1289-0600	10	M1320-0002	12	M1335-0006	14
M1287-6021	64	M1289-0700	10	M1320-0003	12	M1335-0007	14

INDEX BY CATALOG NUMBER

NBS Part No.	Page	NBS Part No.	Page	NBS Part No.	Page	NBS Part No.	Page
M1335-0010	14	M1360-2035	72	M1369-1055	58	M1369-1601	57
M1335-0011	14	M1360-2036	72	M1369-1060	58	M1369-1602	57
M1335-0012	14	M1360-2037	72	M1369-1101	58	M1369-1605	57
M1335-0013	14	M1360-2038	72	M1369-1102	58	M1369-1610	57
M1335-0014	14	M1360-2040	72	M1369-1105	58	M1369-1611	57
M1335-0015	14	M1360-2041	72	M1369-1110	58	M1369-1612	57
M1335-0016	14	M1360-2050	72	M1369-1111	57	M1369-1615	57
M1335-0017	14	M1360-9832	72	M1369-1112	57	M1369-1620	57
M1335-0080	14	M1360-9834	72	M1369-1115	57	M1369-1621	58
M1335-0300	14	M1360-9836	72	M1369-1120	57	M1369-1622	58
M1335-0400	14	M1360-9969	72	M1369-1121	57	M1369-1625	58
M1335-0500	14	M1361-9208	88, 90, 92	M1369-1122	57	M1369-1630	58
M1335-0501	14	M1362-9901	81	M1369-1125	57	M1369-1631	58
M1335-0600	14	M1362-9902	81	M1369-1130	57	M1369-1632	58
M1335-0800	14	M1362-9903	81	M1369-1130	57	M1369-1635	58
M1335-0810	14	M1362-9904	81	M1369-1140	58	M1369-1640	58
M1335-6000	14	M1362-9905	81	M1369-1141	58	M1369-1640	58
M1350-0000	27	M1362-9906	81	M1369-1142	58	M1369-3107	59
M1350-0001	27	M1362-9906	81	M1369-1145	58	M1369-3108	59
M1351-0000	26	M1363-0105	51	M1369-1150	57	M1369-3120	59
M1351-0001	26	M1363-0114	51	M1369-1151	57	M1369-3125	59
M1352-0000	24	M1363-0115	51	M1369-1152	57	M1369-3130	59
M1352-0001	24	M1363-0116	51	M1369-1155	57	M1369-3135	59
M1352-0002	24	M1363-0117	51	M1369-1160	57	M1369-8020	59
M1352-0003	24	M1363-0118	51	M1369-1161	57	M1369-8021	59
M1352-0004	24	M1363-120-10A	50	M1369-1162	57	M1369-8022	59
M1352-0005	24	M1363-120-10M	50	M1369-1165	57	M1369-8023	59
M1352-0006	24	M1363-120-30A	50	M1369-1170	58	M1369-9947	59
M1352-0007	24	M1363-120-40A	50	M1369-1171	58	M1369-9951	59
M1352-6000	24	M1363-230-10A	50	M1369-1172	58	M1369-9960	59
M1353-0000	25	M1363-230-10M	50	M1369-1175	58	M1369-9970	59
M1353-0001	25	M1363-230-30A	50	M1369-1201	58	M1369-9974	59
M1353-0002	25	M1363-230-40A	50	M1369-1202	58	M1369-9977	59
M1353-0003	25	M1363-5002	51	M1369-1205	58	M1369-9979	59
M1353-0004	25	M1363-8012	51	M1369-1210	58	M1369-9982	59
M1353-0005	25	M1363-8013	51	M1369-1211	58	M1369-9985	59
M1353-0006	25	M1363-9910	51	M1369-1212	58	M1369-9986	59
M1353-0007	25	M1369-1001	58	M1369-1215	58	M1369-9988	59
M1354-0000	27	M1369-1002	58	M1369-1220	58	P0160-4440	46
M1354-0001	27	M1369-1005	58	M1369-1301	58	P0160-4460	60
M1355-0000	26	M1369-1010	58	M1369-1302	58	P0240-1080	80
M1355-0001	26	M1369-1011	58	M1369-1305	58	P0240-1090	80
M1360-0100	72	M1369-1012	58	M1369-1310	58	P0240-5000	80
M1360-0101	72	M1369-1015	58	M1369-1311	58	P0300-0350	46
M1360-0102	72	M1369-1020	58	M1369-1312	58	P0300-2370	51
M1360-0103	72	M1369-1021	58	M1369-1315	58	P0300-2371	51
M1360-0200	72	M1369-1022	58	M1369-1320	58	P0440-0061A	80
M1360-1120	71	M1369-1025	58	M1369-1370	58	P0440-0064	72
M1360-1121	71	M1369-1030	58	M1369-1371	58	P0440-0500	49
M1360-1123	71	M1369-1031	58	M1369-1372	58	P0440-0508	49
M1360-2020	72	M1369-1032	58	M1369-1375	58	P0440-4321	64, 69
M1360-2021	72	M1369-1035	58	M1369-1401	58	P0440-4325	64, 69
M1360-2023	72	M1369-1040	58	M1369-1402	58	P0440-4326	64, 69
M1360-2030	72	M1369-1041	58	M1369-1405	58	P0440-4327	64, 69
M1360-2031	72	M1369-1042	58	M1369-1410	58	P0440-4489	64, 69
M1360-2032	72	M1369-1045	58	M1369-1501	58	P0460-7550	85
M1360-2033	72	M1369-1050	58	M1369-1502	58	P0540-5440	82
M1360-2034	72	M1369-1051	58	M1369-1505	58	P0620-0653	80
		M1369-1052	58	M1369-1510	58	P0620-0654	80

INDEX BY CATALOG NUMBER

NBS Part No.	Page
P0620-0662	80
P0620-0664	80
P0620-0920	80
P0620-0921	80
P0620-0959	83
P0620-2410A	80
P0620-2411A	80
P0620-2796	83
P0620-2798	83
P0620-2799	83
P0620-3040	49
P0620-5192	92
P0620-5193	92
P0620-5551	89
P0620-5580	92
P0620-5974	88
P0620-5975	88
P0620-6430	46
P0620-6460	49
P0620-6470	49
P0620-6580	89
P0625-0020	33
P0625-1090	33
P0625-1110	33
P0625-1170	36
P0625-1180	36
P0626-0010	45
P0626-0020	45
P0626-0030	45
P0626-0040	45
P0626-0050	45
P0626-0060	45
P0626-0070	45
P0626-0080	45
P0626-0090	45
P0626-0091	45
P0626-0100	45
P0628-5000	42, 43
P0628-5010	42, 43
P0628-5020	42, 43
P0628-5030	42, 43
P0628-5040	42, 43
P0628-5050	42, 43
P0628-5060	42, 43
P0628-5070	43
P0628-5080	43
P0628-5090	43
P0628-5091	43
P0628-5100	43
P0628-5260	43
P0628-5330	43
P0628-5340	43
P0628-5341	43
P0628-5350	43
P0628-5400	42
P0628-5410	42
P0628-5520	42
P0628-5540	42

NBS Part No.	Page
P0628-5560	42
P0628-5612	42
P0628-5651	42
P0628-6061	42, 43
P0628-6150	42
P0628-6150	42, 43
P0628-6170	43
P0628-6180	43
P0628-6210	43
P0628-6230	43
P0628-6241	42
P0628-6251	42
P0628-6270	42
P0628-6280	43
P0628-6300	43
P0628-6390	42
P0628-6490	42
P0628-6720	43
P0628-6770	43
P0628-6780	42
P0628-6781	42
P0628-6800	42
P0628-6810	42
P0628-6820	42
P0628-6831	42, 43
P0628-6832	42, 43
P0628-7200	43
P0628-7210	42, 43
P0628-7211	42, 43
P0628-7220	42, 43
P0628-7221	42, 43
P0640-0518	49
P0640-0600	49
P0640-0610	49
P0640-0620	49
P0720-2090	90
P0720-2093	90
P0720-2095	90
P0720-2273	90
P0720-2275	88
P0720-2276	59, 90
P0720-2277	88
P0720-2331	92
P0720-2332	92
P0720-2333	92
P0720-2336	59, 92
P0720-2338	51
P0720-2342	92
P0720-2430	89
P0720-2560	92
P0720-2561	92
P0720-2763	88
P0720-5567	92
P0720-5570C	88, 90, 92
P0720-5580	61, 89, 90
P0720-5581	89, 90
P0720-5582	61, 89, 90
P0720-5583	61, 89, 90

NBS Part No.	Page
P0720-5584	61, 89, 90
P0720-5631	92
P0720-5750	92
P0720-5780	88
P0720-5781	88
P0720-5782	88
P0720-5950	89
P0720-5951	89
P0720-5960	89
P0720-5961	89
P0720-5962	89
P0720-5963	89
P0720-6240C3	88, 90, 92
P0720-6268	92
P0720-6339	92
P0720-6450C1	88, 90, 92
P0720-6470	92
P0720-6480	89
P0720-6481	89
P0720-6482	89
P0720-6520	91
P0720-6523	51
P0720-6524	51
P0720-6530	88
P0720-6531	88
P0720-6532	88
P0720-6540	89, 90
P0720-6570	72
P0720-6580	61
P0720-6282	61
P0720-6283	61
P0720-6284	61
P0720-9660	89
P0740-2396	81
P0740-2430	81
P0740-2445	81
P0740-2505	46, 81
P0740-2542	81
P0740-2590	81
P0740-2721C3	81
P0740-2730	49
P0740-2740	49
P0740-3110	81
P0740-3111C3	81
P0740-3113C3	81
P0820-5179	82
P0820-5180	82
P0820-5185	82
P0820-5190	82
P0820-5200	82
P0860-5178	82
PTL-386	21
PTL-393	21
S2116-3051P	10
S2116-3101P	10
TTR-210	10
TTR-215	10
TTR-221	10

NBS Part No.	Page
U9043-0002	35
U9043-0004	35
U9043-0006	35
U9043-0008	35
U9044-0002	35
U9044-0004	35
U9044-0006	35
U9044-0008	35
U9230-0000	35
U9230-0001	35
U9250-0001	35
U9250-0002	35
U9260-0000	35
U9260-0001	35
U9260-0002	35
U9270-0000	31
U9270-0001	31
U9270-0002	31
U9270-0004	31
U9270-0005	31
U9400-0000	34
U9400-0001	34
U9400-0002	34
U9410-0001	34
U9410-0002	34
U9420-0000	33
U9420-0001	33
U9425-0000	33
U9425-0001	33
U9430-0000	34
U9430-0001	34
U9430-0002	34
U9440-0001	31
U9440-0002	31
U9440-0004	31
U9440-0005	31
XMF-8624	64, 65

New Brunswick Scientific Sales and Support

NBS equipment is sold and supported worldwide. Don't see your country listed below?
Write to us at www.nbsc.com/offices and we'll put you in contact with an office near you.

USA HEADQUARTERS

New Brunswick Scientific
Box 4005, 44 Talmadge Rd.
Edison, NJ 08818-4005 USA
Tel.: 1 800 631 5417
+ 1 732 287 1200
Fax: + 1 732 287 4222
bioinfo@nbsc.com
www.nbsc.com

CHINA

For Shakers, CO₂ Incubators,
and Freezers
Eppendorf China Ltd.
China Head Office Shanghai
17th Floor, You You
International Plaza
No. 76 Pu Jian Road
Shanghai 200127 P.R. CHINA
Tel.: +86 21 38560500
Fax: +86 21 38560555
market.info@eppendorf.cn
www.eppendorf.cn

GERMANY

**Eppendorf Vertrieb
Deutschland GmbH**
Peter-Henlein-Straße 2
50389 Wesseling-Berzdorf
GERMANY
Tel.: +49 2232 418-0
Fax: +49 2232 418-155
vertrieb@eppendorf.de
www.eppendorf.de

UNITED KINGDOM

New Brunswick Scientific (UK) Ltd.
17 Alban Park, Hatfield Road
St. Albans, Hertfordshire AL4 0JJ
UK
Tel.: 0800 581331
Tel.: +44 (0)1727 853855
Fax: +44 (0)1727 835666
bioinfo@nbsuk.co.uk
www.nbsuk.co.uk

AUSTRIA + HUNGARY

Eppendorf Austria GmbH
Ignaz Köck Straße 10/2, OG
A-1210 Wien AUSTRIA
Tel: +43 1 890 13 64 0
Fax: +43 1 890 13 64 20
office@eppendorf.at
www.eppendorf.at

CHINA

For Bioprocess Equipment
New Brunswick Scientific
A903 Yin Hai Building
No. 250, Cao Xi Road
Shanghai 200235
P.R. CHINA
Tel.: +86 21 64845955
64845966
Fax: +86 21 64845933
nbschc@online.sh.cn

ITALY

Eppendorf s.r.l.
Via Zante 14
20138 Milano ITALY
Tel.: +390 2 55 404 1
Fax: +390 2 58 013 438
eppendorf@eppendorf.it
www.eppendorf.it

BELGIUM

New Brunswick Scientific NV-SA
Stationsstraat 180/4
3110 Rotselaar BELGIUM
Tel.: +32 1656 2831
Fax: +32 1657 2753
sales@nbsnv-sa.be
www.nbsc.com

CZECH REPUBLIC

**Eppendorf Czech & Slovakia
s.r.o.**
Kolovratská 1476
251 01 Říčany u Prahy
CZECH REPUBLIC
Tel./Fax: +420 323 605 454
eppendorf@eppendorf.cz
www.eppendorf.cz

INDIA

Eppendorf India Limited
Doshi Towers, 4th Floor
156, Poonamallee High Road
Kilpauk, Chennai 600010
INDIA
Tel.: +91 44 42 11 13 14
Fax: +91 44 42 18 74 05
info@eppendorf.co.in
www.eppendorf.co.in

FRANCE

FRANCE

Eppendorf France S.A.R.L.
60, route de Sartrouville
78230 Le Pecq FRANCE
Tel.: +33 1 30 15 67 40
Fax: +33 1 30 15 67 45
eppendorf@eppendorf.fr
www.eppendorf.fr

NETHERLANDS

New Brunswick Scientific B. V.
Kerkenbos 1101,
6546 BC Nijmegen
NETHERLANDS
Tel.: +31 (0)24 3717 600
Fax: +31 (0)24 3717 640
sales@nbsbv.nl
www.nbsc.com/bv

SWITZERLAND

Vaudaux-Eppendorf AG
Im Kirschgarten 30
CH-4124 Schönenbuch
SWITZERLAND
Tel.: +41 61 482 1414
Fax: +41 61 482 1419
vaudaux@vaudaux.com
www.vaudaux-eppendorf.ch

a culture of innovation



New Brunswick
an eppendorf company

